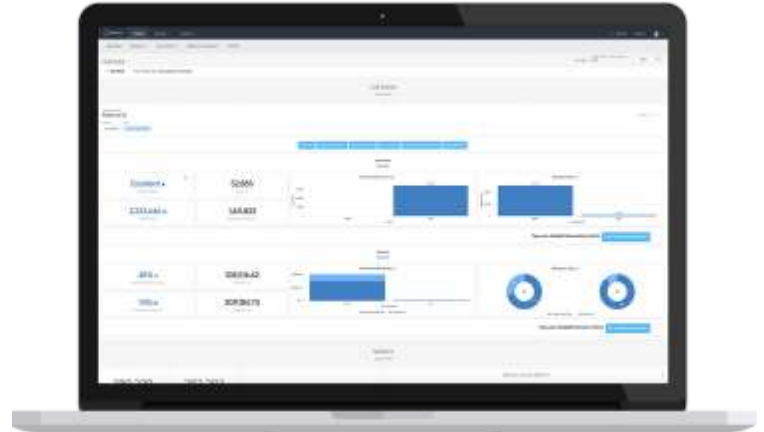


Kollective Analytics produces live event insights and ECDN reporting metrics to maximize your content delivery investment.

Key Features:

- Activity, Quick Stats and Producer dashboards
- Viewership and experience reports
- Network performance center
- Peering cluster graphs



Convenient Performance Tracking

Monitor quality scores, event views, peering efficiency and bandwidth savings from a central activity dashboard.



Advanced Delivery & Consumption Views

Investigate geographic distributions and granular viewership tiles to push event performance to the next level.



Instant Activity and Event Management

Filter events by live now and recent activities and drill into viewer experience metrics.



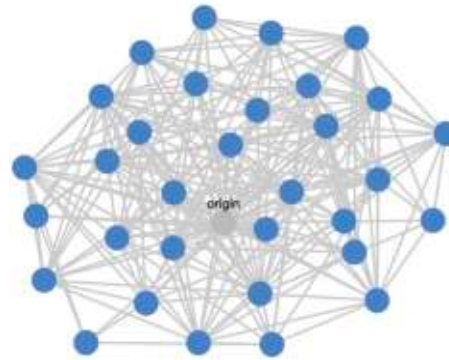
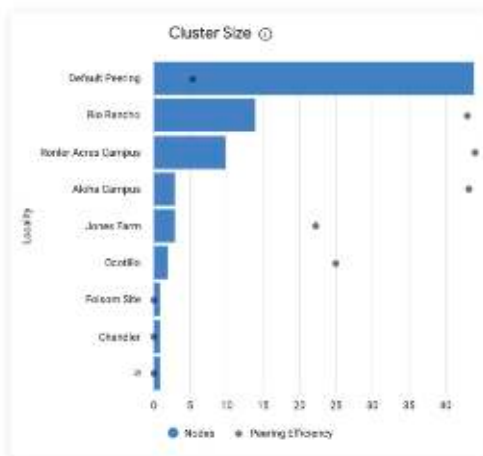
Segment Viewing Needs

Tap into specialty dashboards for producers and quick stats with ultra-fast load times.



Network Efficiency Reporting

Explore interactive peering cluster graphs to deliver innovative savings and efficiency stats.



Peering Cluster

Innovative peering cluster graphs display QoE visuals with node, IP address, and byte details.

Producer Dashboard

Monitor key event metrics in a lightning-fast dashboard designed for real-time performance tracking.



Kolletive Analytics Features and Insights

- ✓ Bandwidth Savings
- ✓ Peering Efficiency
- ✓ Reach Score
- ✓ Average View Duration
- ✓ Unique View Duration
- ✓ Average Quality of Experience
- ✓ Unique User Quality of Experience
- ✓ Unique User ID
- ✓ External IP Address
- ✓ Platform Distribution
- ✓ Platform Version Distribution
- ✓ Browser Distribution
- ✓ Browser Version Distribution
- ✓ Buffering Count
- ✓ Buffering Time Play
- ✓ Type (Live/VOD)
- ✓ Content Provider
- ✓ Geoexplorer
- ✓ Data Export

Tap into advanced ECDN insights and reporting with Kolletive Analytics

Start your 30-day free trial - <https://kolletive.com/trial>